

CONDESA INDUSTRIAL LOT

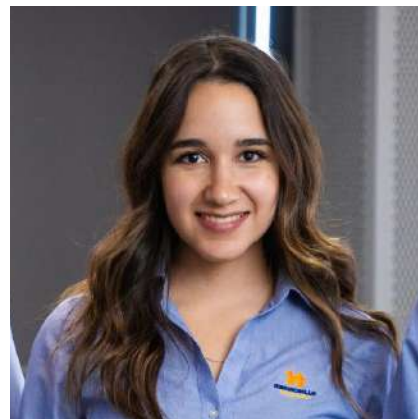
BUILD-TO-SUIT LAND FOR LEASE



José Antonio Gallástegui
Real Estate Division Director



Gerardo Inzunza
Industrial Properties



Valeria López
Property Management



Gerardo Lozano
Commercial Properties

OUR LEADERSHIP

When you care about what you do, it shows.

We are a company of passionate, hardworking people, and our leadership team will be intimately involved in every aspect of your project.

Our company's diverse and talented leaders have at least one thing in common: **a passion for what they do.**



FEATURED PROJECTS

Mixed-Use Developments



Punta Este
Corporativo



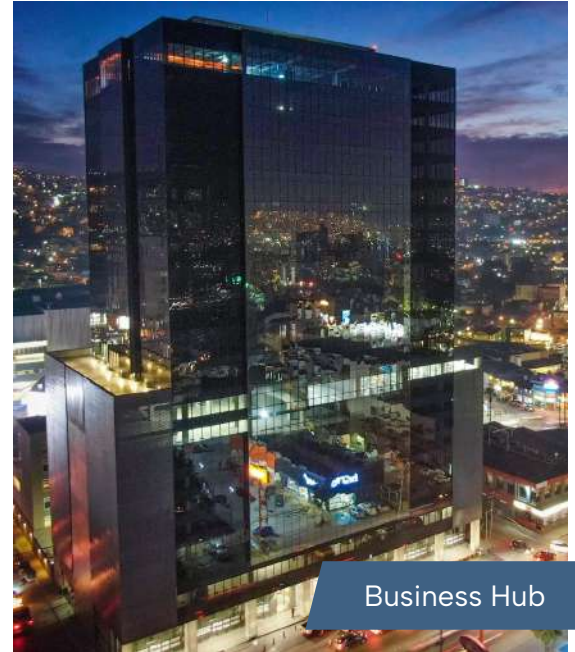
Plaza Punta
Este



Hyatt Place
Hotels



Santa Bárbara
Condos



Business Hub



FEATURED PROJECTS

Industrial Developments



El Sahuaro
Industrial Park



El Desierto
Industrial Park



Condesa
Industrial Park



Sendero Industrial
Park





CONDESA INDUSTRIAL LOT

Land for lease (build-to-suit project)





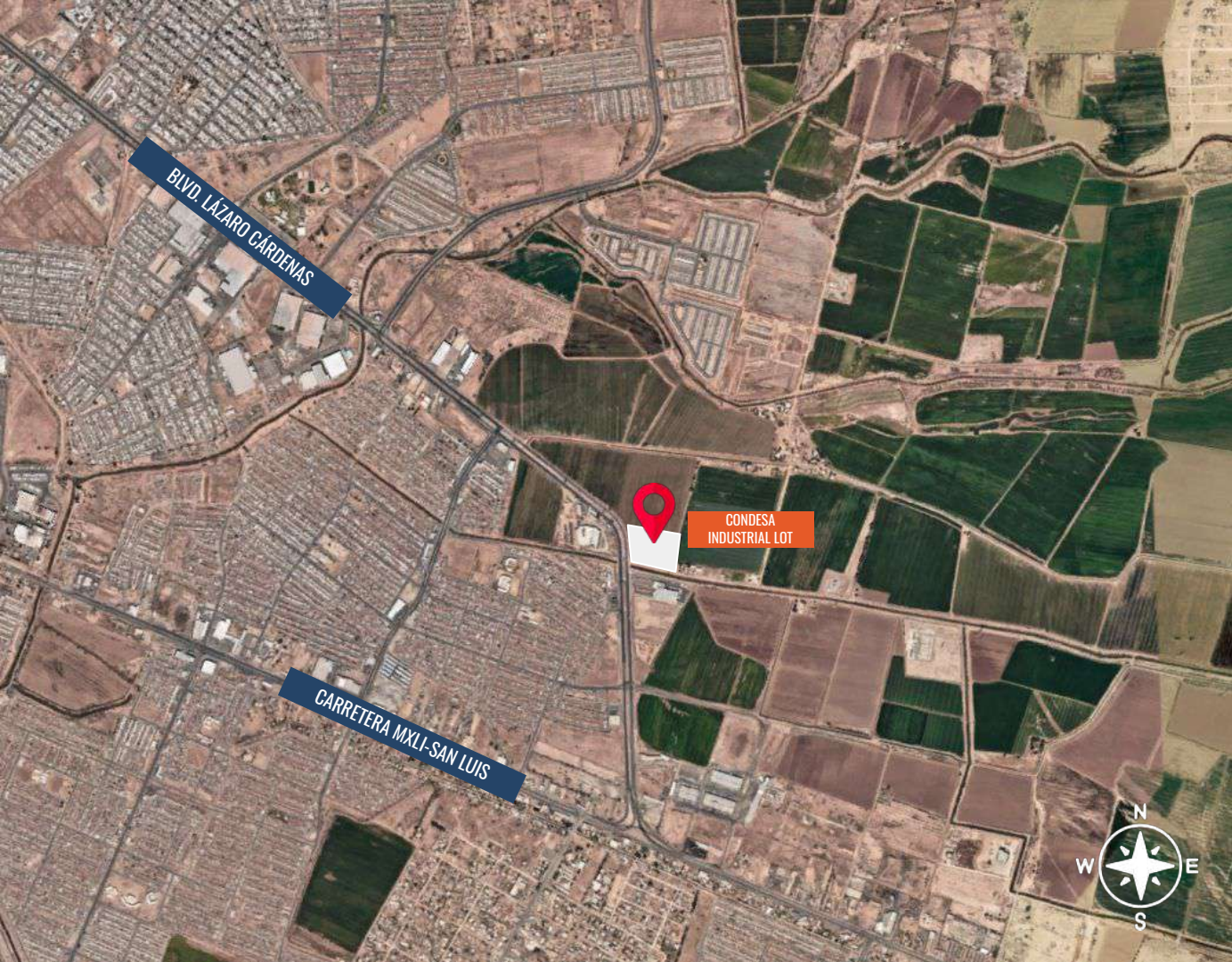
CONDESA INDUSTRIAL LOT

Build-To-Suit Construction Area

Mexicali, B.C.

- 35,111.75 m² (377,939.37 SF)
- Industrial land with high development potential
- Excellent location in a growing area
- Local workforce available
- Availability of infrastructure services
- Nearby public transportation routes
- Ready for build-to-suit construction





CONDESA INDUSTRIAL LOT LOCATION

1.7 km away from
Sendero Industrial Park



CONDESA INDUSTRIAL PARK COMMUNICATIONS

Calexico West USA
Entry
35 min drive (19.7km)

Calexico East USA Entry
20 min drive (14.8km)

CONDESA INDUSTRIAL PARK DEVELOPMENT

Housing development by
Hermosillo, currently an
increasing amount of
13,000 homes.

Surrounding residential
areas:
Valle de Puebla (20,000
homes)



CONDESA INDUSTRIAL LOT

Services

- Potable water
- Sanitary drainage
- Storm drainage
- Public lighting
- Natural gas
- Electric power
- Fiber optic for voice and data

READY FOR GROUNDBREAKING.



CONDESA INDUSTRIAL LOT

BUILD-TO-SUIT LAND FOR LEASE

GERARDO INZUNZA

gerardo.inzunza@hermosillo.com